

**AUST-PHILS
ALUMINUM INT'L., INC.**

2021: 29 Years of Service



"Product quality, customer service and your satisfaction is our commitment,
and that has been our tradition"

29 years of AUST-PHILS ALUMINUM INTERNATIONAL, INC.



1992

Mr. **Lui Chi – Hang**, co-founder of **Fast Glass Aluminum International, Inc.** was located **Paco, Manila**

**CLEARVIEW
ALUMINUM
INT’L., INC.**

1993

Moved its operations to **V. Luna, Quezon City** under its new registered name **Clearview Aluminum Int’l., Inc.**



1994

Clearview Aluminum International, Inc. matured to what is now as **Aust-Phils Aluminum International, Inc.**

**CEBU &
DAVAO
BRANCH**

1995

Setting up regional office in the most urbanized area of the the South, the Queen City itself, **Cebu** then later on opened **Davao**



1998

Mr. Lui C. Wai-CEO/President
Centralization of all its showroom, factory, fabrication, Sales & Administration offices



“Product quality, customer service and your satisfaction is our commitment, and that has been our tradition”



CONTENTS

Company History A Tribute	01
------------------------------	----

Company History The Beginning	02
----------------------------------	----

Company History The C.E.O.	03
-------------------------------	----

Completed Projects	04
--------------------	----

Products	39
----------	----

Services	55
----------	----



A TRIBUTE

Mr. Lui Chi – Hang, co-founder of Aust-Phils Aluminum International, Inc., was born in Guandong, China on October 17, 1932. He was left as orphan as his father passed away when he was six, and his mother passed away on the following year; a direct result of the Sino – Japanese war.

Without parents, he was brought up by his grandmother, who passed away at a ripe age of 103. Mr. Hang, as everyone knows him, never had any formal education. His schooling years was interrupted at grade three due to the war. To escape what was then war torn China, together with his grandmother and sister, all escaped to Hong Kong in 1949.

After venturing into numerous jobs, ranging from bakery to traditional Chinese cooking, he decided that those were not his true calling. As a teenager, he took up another apprenticeship in a jewelry store. At the beginning, he was delegated with menial task at the store, ranging from floor sweeping to delivery. But before too long, his leadership ability, keen sense of observation and desire to learn, earned him the trust from the store's owner. So much so that the owner relied more to him in the running of the business than their own two sons.

Realizing that as a family business concern, his role in the jewelry store will always be one of an employee, Mr. Hang left after a few.

From small concession stands at someone else's store front, he finally founded his own jewelry shop before he turned 30, in one of the most trendy tourist districts at Tsim Sha Tsui in Hong Kong and soon after, into the Philippines.

Within a few short years, Mr. Hang established one of the first imported fine jewelry distribution networks within Manila, with the items being made and imported from around the world. Shortly after that, he began to import crocodile leather goods from Singapore.



Lui Chi Hang

From his work, he grew to love the Philippines. From distribution, he later ventured into his own stores, incorporating other trading items such as ivory carving, fine watches, and gem stones.

In 1992, together with Mr. Nielsen, they founded Aust-Phils aluminum International, Inc..

Six years later, Aust-Phils has over 100 employees. Aust-Phils was founded in the principle of honesty, integrity, and industriousness. With quality product, and best possible customer service, it is Mr. Hang's hope that this qualities will become his legacy.

With his passing in 1998, Aust-Phils will continue to operate under such principle, and march towards the goal of becoming the **Best In the industry of Aluminum Building Material Provider in the Philippines.**



A TRIBUTE

The Meeting of the Minds

It all began with two men accidentally crossing each other's paths in a luxurious lobby of a deluxe hotel in Manila. Two men both gifted with a discerning nose for business and an insatiable taste for challenges...

Mr. Deniel M. Nielsen, an Australian developer, chanced upon Mr. Lui Chi Hang, a Chinese businessman in the Philippines, in the latter's establishment in Manila Midtown Hotel. In the course of this meeting, business transactions transpired in an unconventional manner putting each man's honesty, honor and integrity to the test. The results of that test had been more than positive! Moreover, this business relationship in the onset blossomed into a friendship that bordered on trust and confidence. That same trust and confidence paved the way to a mutual interest in conducting a business venture.

The Conception and Birth

Both men's noses for business coupled with a highly reliable instinct led to the founding of an aluminum and glass company named *Fast Glass aluminum International, Inc.* located in Paco, Manila. Hard work and attention to detail contributed to the company's pioneering in imported, high-end quality shower enclosures and later extending its services to residential and commercial windows. A year later, *Fast Glass Aluminum International, Inc.* moved its operations to V. Luna, Quezon City under its new registered name *Clearview Aluminum Int'l., Inc.*

During the height of the boom in the construction industry in 1992, *Clearview Aluminum International, Inc.* further progressed with the increased demand for all types of construction material. Again, operations had to be moved to a larger venue and so it was moved to Malinta, Valenzuela. The move prompted the company to increase its manpower by 500% and open up showrooms in San Juan and Manila Midtown Hotel to advance its services and subsequently promote product awareness.

In 1994, *Clearview Aluminum International, Inc.* matured to what is now *Aust-Phils Aluminum International, Inc.* giving emphasis to Australian quality.

In 1995, *Aust-Phils Aluminum International, Inc.* began branching out, setting up regional office in the most urbanized area of the South, the Queen City itself, Cebu.

In 1998, *Aust-Phils Aluminum International, Inc.* directed a big move having an ultimate aim to render excellence in quality and service with no compromise. This aim was to be achieved through the centralization of all its showroom, factory, fabrication, Sales and Administration offices in a 4,000 square meter compound located in Bicutan Office called *Aust-Phils Aluminum International, Inc. Centre.*



The business will move on in tribute of the memory of Mr. Lui Chi Hang. His nose for business reigns still in the person of his youngest son, Mr. Lui C. Wai, who at the age of 25 years has in fact established himself as an entrepreneur in possession of a retail and export business in fine jewelry.

Before his father departed the world, Mr. Wai had voluntarily gone through hands-on training in all departments of the company in order to gain insight and added knowledge and to assist in the business, any way he can. He devoted much of his time squeezing extra hours in his already hectic schedule. Acquiring knowledge in a totally different line of work had been a great challenge for Mr. Wai. More so, putting together what he has amassed had not been an easy task.

In the absence of his father, not only was Mr. Wai required to learn the ropes of the business from scratch, he was set out to prove himself worthy as the new leader of the company and not simply the "heir to throne".

True enough, his leadership and management skills were put to the utmost test during economic crunch that hit the entire nation, middle of 1998. Tourism, production, manufacturing, export and other industries including construction yielded downward slopes in their performance. Companies began folding up left and right without the exception of construction companies. *Aust-Phils Aluminum International, Inc.* however, under the firm grip of Mr. Wai, refused to follow this trend.

To Mr. Wai, weathering the storm in 1998 did not make him sit back and relax. He did not put a stop to the learning and the struggling. In his mind, another crisis, may hit the country and this time with a bigger blow, *"It is better to be prepared for the worst prospect."*, Mr. Wai states when asked about his work perspective.

Presently, Mr. Wai has taken the name of *Aust-Phils Aluminum International, Inc.* away from obscurity in the industry, making it synonymous to aluminum building materials. He has inspired professionalism among his employees by setting the example himself. He has emphasized excellence in every deed he deems worth doing passing his work habit on to his team of dedicated employees.

In all those trying times, Mr. Nielsen was with Mr. Wai every step of the way shedding light in areas where it had become dim along the way. His shared wisdom was made useful by Mr. Wai in his undertakings. His fatherly support was, and still is, of great value to Mr. Wai.

The Aust-Phils Tradition

The founders and leaders of *Aust-Phils Aluminum International, Inc.* have instilled in their employees, totaling a number of 1200, the company's everyday mission:

"Product quality, excellent service and customer satisfaction is our commitment...and that has always been our tradition."



COMPLETED PROJECTS-COMMERCIAL

VISTA HUB

21st Drive Fort Bonifacio Taguig City

Owner:
Vista Residences

Scope:
-Curtain wall
-Aluminum Composite
Panel (Cladding Works)
-Vertical Slats



ETON TOWER

Dela Rosa St., cor Rufino , Legaspi Village Makati City

Owner:
Eton Properties
Philippines, Inc.

Scope:
-Curtain wall
-Aluminum Composite
Panel (Cladding Works)
-Vertical Slats





COMPLETED PROJECTS-COMMERCIAL

ONE UPTOWN RESIDENCE(UPRES) North Bonifacio Global City Taguig

Owner:
Megaworld Corp.

Scope:
-Curtain wall
-Louvers
-Aluminum Cladding
Works



HORIZON 101 CebuCity

Owner:
Taft Property Ventures
Inc.

Scope:
-Punch Windows





COMPLETED PROJECTS-COMMERCIAL

MAXILOM

Robinsons Galleria Cebu, General Maxilom Ave Ext, Cebu City

Owner:

Robinsons Land Corp.

Scope:

- Curtain wall
- Aluminum Composite Panel (Cladding Works)
- Store Fronts



AGILA 6D THEATER

RSBS Blvd., Sta. Rosa City Laguna

Owner:

Enchanted Kingdom Inc.

Scope:

- Curtain wall
- Aluminum Composite Panel (Cladding Works)





COMPLETED PROJECTS-COMMERCIAL

SCAPE & BIOPOLIS

Macapagal Blvd. MOA Complex Pasay City

Owner:
Prime Alumer

Scope:
-Curtain wall
-Punch Windows
-Aluminum Composite
Panel (Cladding Works)
-Vertical Slats



LOT 7

Bonifacio Global City

Owner:
MDC

Scope:
-Curtain wall
-Aluminum Composite
Panel (Cladding Works)
-Vertical Slats





COMPLETED PROJECTS-COMMERCIAL

EVIA MALL

Daang Hari Road, Las Piñas City

Owner:
Vista Residences

Scope:
-Curtain wall
-Skylight



NORTHGATE ALABANG BPO

Indo-China Drive, Northgate Cyberzone, Alabang, Muntinlupa City

Owner:
Keyland Corp

Scope:
-Curtain wall
-Punch Windows
-Aluminum Composite
Panel (Cladding Works)





COMPLETED PROJECTS-COMMERCIAL

ROBINSONS-TERA TOWER

C5 Road, Quezon City

Owner:
Robinsons Land Corp.

Scope:
-Curtain wall
-Aluminum Composite Panel (Cladding Works)
-Aluminum Horizontal Slats



ARYA TOWERS

Bonifacio Global City, Taguig city

Owner:
Arthaland Corp.

Scope:
-Curtain wall
-Aluminum Composite Panel (Cladding Works)
-Vertical Slats





COMPLETED PROJECTS-COMMERCIAL

AMAIA STEPS MANDAUE

168 Plaridel St, Umapad, Mandaue City, 6014 Cebu

Owner: MDC

Scope:
-Punch Windows



MSY HOLDING TOWER 1

Pescadores Road, Cebu Business Park, Cebu City, 6000 Cebu

Owner:
MSY Holdings Corp.

Scope:
-Curtain wall
-Punch Windows
-Aluminum Composite Panel (Cladding Works)
-Vertical Slats





BOTANICA NATURE RESIDENCE PH1
Loyola Heights Quezon City

Owner:
Filinvest Land Inc.

Scope:
-Punch Windows



VISTA 309 KATIPUNAN
Loyola Heights Quezon City

Owner:
Vista Residences

Scope:
-Punch Windows





COMPLETED PROJECTS-COMMERCIAL

THE BIG APPLE-PODIUM & CENTRAL PARKWEST 7th Avenue, North Bonifacio, Fort Bonifacio, Taguig City

Owner:
Federal Land Inc.

Scope:
-Curtain wall
-Aluminum Cladding
Works



81 NEWPORT BOULEVARD Newport Boulevard, Pasay City

Owner:
Megaworld Corp.

Scope:
-Curtain wall
-Aluminum Cladding
Works





COMPLETED PROJECTS-COMMERCIAL

ABREEZA Davao City

Owner:
MDC

Scope:
-Punch Windows
-Swing Door



WIL TOWER MALL E. Lopez Drive Brgy. South Triangle Q.C.

Owner:
Vista Residence

Scope:
-Curtain wall
-Punch Windows
-Aluminum Composite
Panel (Cladding Works)





COMPLETED PROJECTS-COMMERCIAL

THE GROVE BY ROCKWELL PH2 Eulogio Rodriguez Jr. Ave, Pasig

Owner:
Rockwell Land Corp.

Scope:
-Punch Windows
-Swing Door



CURRENCY TOWER

Garnet Road, corner, Doña Julia Vargas Ave, Ortigas Center, Pasig City

Owner:
Vista Residence

Scope:
-Curtain wall
-Punch Windows
-Aluminum Composite Panel (Cladding Works)
-Vertical Slats





COMPLETED PROJECTS-COMMERCIAL

PARK TERRACES T1 & POINT TOWER

West St, Makati City

Owner:

Makati Development Corp.

Scope:

- Curtain wall
- Punch Windows
- Sliding Doors



KUKUN BGC

BGC, Taguig City

Owner:

Ayala Land Incorporated

Scope:

- Curtain wall
- Punch Windows
- Vertical Slats





COMPLETED PROJECTS-COMMERCIAL

RADIANCE MANILA BAY –NORTH & SOUTH TOWER Roxas Boulevard, Pasay City

Owner:
Robinsons Land Corp.

Scope:
-Curtain wall
-Punch Windows
-Vertical Slats
-Railings
-Aluminum Cladding



SIGNA TOWER

Rufino St., cor Valero St., Salcedo Village, Makati City

Owner:
Robinsons Land Corp.

Scope:
-Curtain wall
-Store Front
-Aluminum Composite
Panel (Cladding Works)





COMPLETED PROJECTS-COMMERCIAL

MANDANI BAY-SALES GALLERY

North Reclamation, Zuellig Avenue, Mandaue City

Owner:

HT Land

Scope:

- Fixed Point-Curtain wall
- Aluminum Composite Panel (Cladding Works)



ESTANCIA

Capitol Commons, Brgy. Oranbo Pasig City

Owner:

Ortigas & Company
Limited Partnership

Scope:

- Curtain wall
- Store Fronts
- Canopy
- Aluminum Composite Panel (Cladding Works)





COMPLETED PROJECTS-COMMERCIAL

AMISA CLUBHOUSE & TOWER Punta Engaño, Mactan, Cebu City

Owner:
Robinsons Land Corp.

Scope:
-Punch Windows
-Swing Door



EXCHANGE REGENCY Exchange Road cor. Meralco Ave. and Jade Drive, Ortigas Center, Pasig

Owner:
Novel Land Corp.

Scope:
-Punch Windows





COMPLETED PROJECTS-COMMERCIAL

Owner:
Serendra Inc.

Scope:
-Curtain wall
-Store Front
-Aluminum Composite
Panel (Cladding Works)



THE MERANTI TOWER
Fort Bonifacio, Taguig City



Owner:
Makati Development
Corp.

Scope:
-Curtain wall
-Punch Windows



RED OAK
Fort Bonifacio, Taguig





COMPLETED PROJECTS-COMMERCIAL

NET 25 Quezon City

Owner:
Eagle Broadcasting
Corporation

Scope:
-Curtain wall
-Aluminum Cladding



A-PLACE BUILDING/ ONE CORAL

Coral Way Drive, Mall Of Asia Complex, Central Business Park 1, Island A, Pasay

Owner:
ASYA

Scope:
-Curtain wall
-Store Front
-Aluminum Composite
Panel (Cladding Works)





COMPLETED PROJECTS-COMMERCIAL

GATEWAY REGENCY 2

Pioneer, Mandaluyong

Owner:
Robinsons Land Corp.

Scope:
-Punch Widnows



BEACON TOWER

Arnaiz Ave., cor Don Chino Roces Ave., Pasong Tamo Makati City

Owner:
Geo State

Scope:
-Curtain wall
-Punch Windows





COMPLETED PROJECTS-COMMERCIAL

LEGRAND TOWER 1 & 2 Eastwood City, Libis

Owner:
Megaworld Corp.

Scope:
-Curtain wall
-Punch Windows



GREENBELT MADISON Salcedo St., Legaspi Village Makati City

Owner:
Megaworld Corp.

Scope:
-Curtain wall
-Punch Windows





COMPLETED PROJECTS-COMMERCIAL

ROBINSONS CYBERGATE A-CEBU Cebu City

Owner:
Robinsons Land Corp.

Scope:
-Curtain wall
-Semi Unitized Windows



ADRIATICO RESIDENCES Adriatic St., cor., Pedro Gil Ave., Ermita Manila

Owner:
Robinsons Land Corp.

Scope:
-Punch Windows





COMPLETED PROJECTS-COMMERCIAL

THE GRAND MIDORI TOWER Legaspi st., Legaspi Village, Makati City

Owner:
Federal Land Orix Corp.

Scope:
-Curtain wall
-Semi Unitized Windows



JAZZ RESIDENCE PH1 Jupiter st., Makati City

Owner:
SM Corp.

Scope:
-Punch Windows





COMPLETED PROJECTS-COMMERCIAL

PARK TERRACES TWIN TOWER 3 & POINT TOWER 2

West St, Makati, Metro Manila



Owner: Makati Development Corp.

Scope:

- Punch Windows
- Curtain wall
- Z-type Louvers



COMPLETED PROJECTS-RESIDENTIAL

BGC FLATS-5TH AVE DORMITORY 5TH Street, Bonifacio Global City



Owner:
Fort Bonifacio Dev. Corp

Scope:
-AP-100 Series for Sliding Door
-AP-38 Series for Sliding Window
-MQ 140

Finish:
-Powder Coated Matte Black

Glass:
-Clear & Tinted Glass





COMPLETED PROJECTS-RESIDENTIAL

PROPOSED TWO STOREY RESIDENCE Kawayan Cove, (Nasugbu, Batangas)

System:

- Seamless Curtain Wall
- AP-100 Series for Sliding Door
- AP-60Series for Sliding Window
- AP-50 Series for Awning Casement Window

Finish:

- Powder Coated Wood Finish

Glass:

- Reflective Glass



PROPOSED TWO STOREY RESIDENCE Ayala Southvale, Sonera (Laspiñas City)

System:

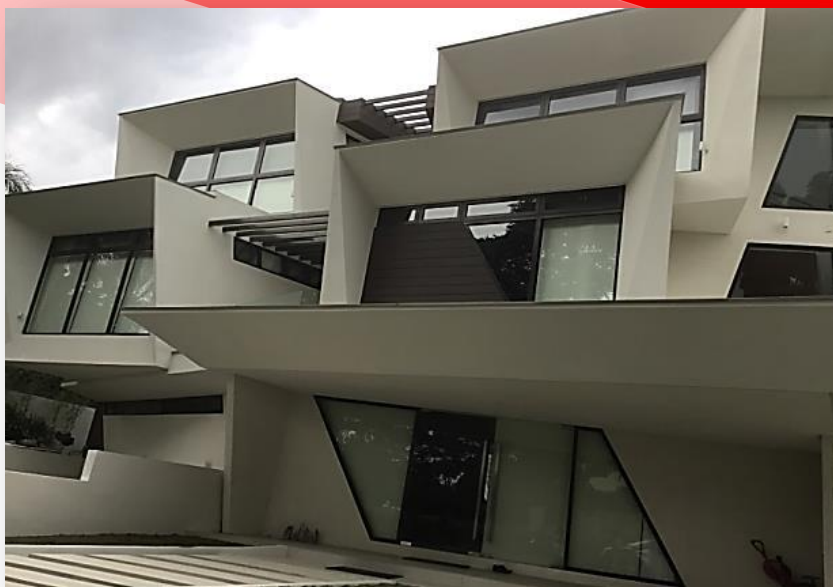
- AP-100 Series for Sliding Door
- AP-80 Series for Swing Door (hinge type)
- AP-50 Series for Awning, Casement, and Fixed Window

Finish:

- Powder Coated Mid Bronze Finish

Glass:

- Clear Glass





COMPLETED PROJECTS-RESIDENTIAL

PROPOSED TWO STOREY RESIDENCE South Forbes Park, (Makati City)

System:

- Curtain Wall-Curved Glass
- AP-100 Series for Sliding Door
- AP-60 Series for Sliding Window
- AP-50 Series for Awning Casement Window

Finish:

- Powder Coated Matte Black Finish

Glass:

- Clear Glass



PROPOSED TWO STOREY RESIDENCE Ayala Southvale, Sonera (Laspiñas)

System:

- AP-100 Series for Sliding Door
- AP-60 Series for Sliding Window
- AP-50 Series for Awning Casement Window

Finish:

- Powder Coated Matte Black

Glass:

- Clear Glass





COMPLETED PROJECTS-RESIDENTIAL

PROPOSED TWO STOREY RESIDENCE Cainta, Rizal

System:

- Curtain Wall Glass w/ Glass Fins
- AP-100 Series for Sliding Door
- AP-60 Series for Sliding Window
- AP-50 Series for Awning Casement Window

Finish:

- Powder Coated Matte Black Finish

Glass:

- Clear Glass



PROPOSED TWO STOREY RESIDENCE Davao City

System:

- AP-90 Series for Sliding Door
- AP-60 Series for Sliding Window
- AP-50 Series for Awning Casement Window

Finish:

- Powder Coated Matte Black Finish

Glass:

- Clear Glass





COMPLETED PROJECTS-RESIDENTIAL

PROPOSED TWO STOREY RESIDENCE Puerto Gallera

System:

- AP-90 Series for Sliding Door
- AP-60 Series for Sliding Window
- AP-50 Series for Awning Casement Window

Finish:

- Powder Coated Matte Black Finish

Glass:

- Tinted Green Glass



PROPOSED TWO STOREY RESIDENCE Alfonso, Cavite

System:

- SL-160 Series for Sliding Window
- L-100 Series for Sliding Door

Finish:

- Clear Anodized Finish

Glass:

- Clear Float Glass





COMPLETED PROJECTS-RESIDENTIAL

ANVAYA COVE (MULTI DWELLING UNIT) Morong Bataan

System:

- 131 Series for Fixed and Sliding Window
- L-100 Series for Sliding Window

Finish:

- Powder Coated Mid-bronze Finish

Glass:

- Clear Float Glass



PROPOSED TWO STOREY RESIDENCE Ayala West Grove, (Silang Cavite)

System:

- SER Series for Fixed and Operable Window
- L-100 Series for Sliding Door

Finish:

- Powder Coated Wood Finish

Glass:

- Clear Tinted Green Tempered Glass





COMPLETED PROJECTS-RESIDENTIAL

CARPET WORLD Marcos Highway (Pasig City)

System:

- AP-100 Series Sliding Door
- AP-80 Series Fixed Window in Z type Louver
- AP-60 Series Sliding Window
- AP-50 Series Awning Window
- MQ-120 Series Fixed Window

Finish:

- Powder Coated Wood Finish

Glass:

- Clear Tempered Glass



FANBI REALTY Manggahan Brgy. Rosario, (Pasig City)

System:

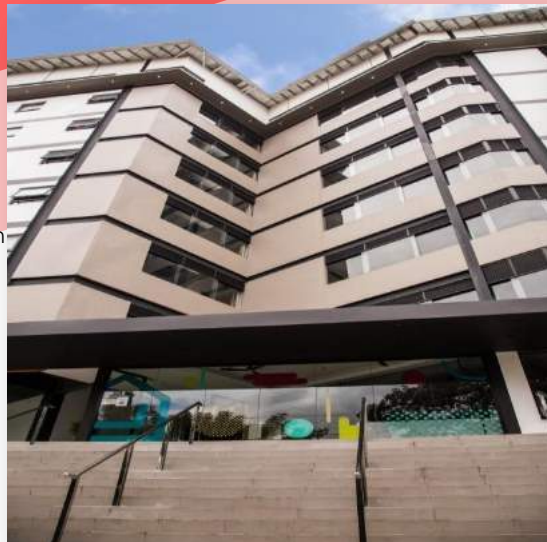
- AP-80 Series Fixed Window
- AP-50 Series Awning Window
- Frameless fixed window
- Z-type Fixed Louver

Finish:

- Powder Coated Matte Black Finish

Glass:

- Clear Float Glass





COMPLETED PROJECTS-RESIDENTIAL

RCBC STERLING ENCLAVE Green Meadows, (Quezon City)

System:

- 131/ 120 Series for Sliding Window
- L-100 Series for Sliding Door

Finish:

- Powder Coated Bronze Finish

Glass:

- Clear Float Glass



PROPOSED TWO STOREY RESIDENCE White Plains, (Quezon City)

System:

- 131 Series for Sliding Window
- L-100 Series for Sliding Door

Finish:

- Powder Coated White Finish

Glass:

- Clear Float Glass





COMPLETED PROJECTS-RESIDENTIAL

PROPOSED TWO STOREY RESIDENCE Ayala West Grove (Carmona Cavite)

System:

- AP-100 Series Sliding Door
- AP-80 Series Fixed Window
- AP-60 Series Sliding Window
- AP-50 Series Awning Window
- AP-50 Series Fixed Window
- Jalousie Window in 104 Clip

Finish:

- Powder Coated Matte Black Finish

Glass:

- Clear Float Glass



TWO STOREY EVENT PLACE & COFFEE SHOP Garden Hills Subd. (Alfonso, Cavite)

System:

- AP-50 Series Awning Window
- AP-50 Series Fixed window
- Frameless Door in Patch Fitting
- Seamless Fixed Window in 2x4 Tubular

Finish:

- Powder Coated Matte Black Finish

Glass:

- Clear Tempered Glass





COMPLETED PROJECTS-RESIDENTIAL

AVIDA NUVALI (MODEL UNIT) Santa Rosa, Laguna

System:

- 131/ 120 Series for Sliding Window
- L-100 Series for Sliding Door

Finish:

- Powder Coated Bronze Finish

Glass:

- Clear Float Glass



AVIDA NUVALI CLUBHOUSE Santa Rosa, Laguna

System:

- 131 Series for Sliding Window
- L-100 Series for Sliding Door

Finish:

- Powder Coated White Finish

Glass:

- Clear Float Glass





COMPLETED PROJECTS-RESIDENTIAL

PROPOSED TWO STOREY RESIDENCE AFPOVAL (Taguig City)

System:

- AP-60 Series Sliding Window
- AP-50 Series Awning Window
- AP-50 Series Fixed Window

Finish:

- Powder Coated Bronze Finish

Glass:

- Reflective Bronze tempered Glass



PROPOSED TWO STOREY w/ ROOF DECK & BASEMENT Alabang Village (Muntinlupa City)

System:

- AP-80 Series Double leaf Swing Door (Hinge Type)
- AP-50 Series Awning Window
- AP-100 Series Sliding Door

Finish:

- Powder Coated Matte Black Finish

Glass:

- Clear Tempered Glass





COMPLETED PROJECTS-RESIDENTIAL

PROPOSED THREE LEVEL MODERN RESIDENCE

Ayala West Grove (Silang Cavite)

System:

- AP-100 Series Sliding door
- AP-80 Series Fixed Window
- AP-60 Series Sliding Window
- AP-50 Series Awning Window
- Frameless Windows

Finish:

- Powder Coated Charcoal Gray Finish

Glass:

- Clear Tempered Glass



PROPOSED TWO STOREY RESIDENCE

Urdaneta Village (Makati City)

System:

- AP-100 Series Sliding door
- AP-80 Series Single leaf Swing door (Hinge Type)
- AP-60 Series Sliding Window
- AP-50 Series Awning Window
- Jalousie Window 152 Blade

Finish:

- Powder Coated Matte Black Finish

Glass:

- Clear Tempered Glass





FABRICATION AREA

This division caters for the warehousing and assembling of all aluminum products to ensure all orders are accurately processed and received in good condition. The company has embraced the total quality control concept and vigorously ensures that quality is checked through all stages of the production process.

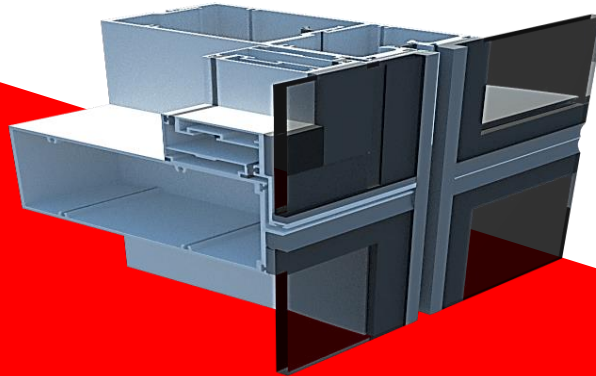




PRODUCTS: CURTAIN WALL

Fully Unitized Curtain Wall

Are installed as a series of factory-assembled frames, usually with interlocking mullions and transoms. The Scope of works is divided into manageable panel sizes and is **fabricated off-site including glazing**. The **prefabricated panels** are then installed on site after- wards. **Very convenient for projects** where there is a **time constraint**.



SEN Series: Curtain Wall
90mm x 185
commercial for curtain wall.

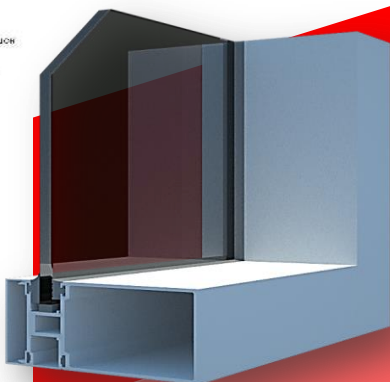
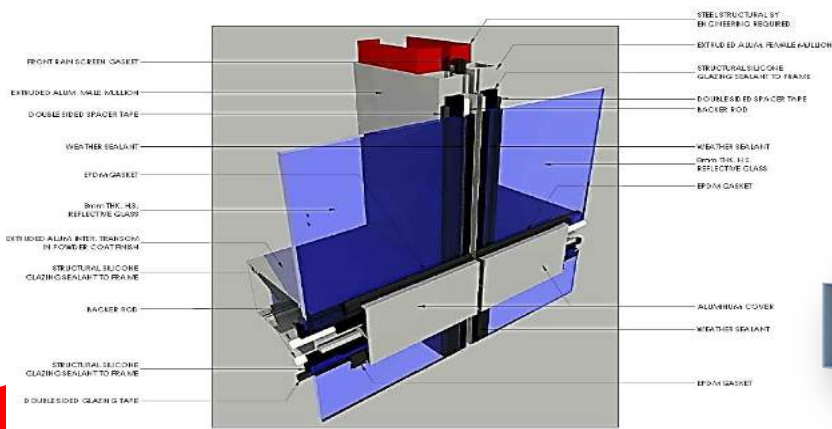
CHOOSING BETWEEN STICK AND UNITIZED CURTAINWALL SYSTEMS		
SELECTION CRITERIA	STICK CURTAINWALL	UNITIZED CURTAINWALL
Project Size	Small	Large
Wall Configuration	Complex (Many changes in plane, e.g soffits, corners, etc.)	Monolithic (Large expanses of flat wall)
Joint Pattern	Random	Uniform horizontal sill line
Glazing	Field	Factory
Inter-story Movements	Very limited	Inter-locking frames accommodate movements
Quality Control	Subject to site variables (both environment and equipment)	Controlled factory conditions
Modification	Can be cut-to-fit in the field	Pre-engineered
Sealing	Subject to site variables	Minimal field sealing
Field Labor Cost	High (Many parts to track and assemble)	Low
Field Labor Duration	Slow	Fast (often setting 75 sqft or more per unit)
Access and Safety	Exterior access aquired	Set from the interior (Exterior optional)



PRODUCTS: CURTAIN WALL

Stick type Curtain Wall

Are installed on site, component by component, materials are delivered as stock lengths or knock down from. The Frames are assembled first on site then the glass follows afterwards. **Very convenient** for low budget projects **where the schedule** for glazing works are not critical.



MQ Series: Fixed Panel
70mm x 140
commercial for curtain wall

Seamless Curtain Wall

A system which either the Mullions or the transoms are not visible outside of the Façade, or it might be a combination of Vertical frames and some Glass Fins





PRODUCTS: SLIDING DOOR

Sliding Door

Both sashes slide horizontally in a double sliding window. Only one sash slides in a single-sliding window. Ventilation area can vary from a small crack to an opening of one-half the total glass area. Screens can be placed on the exterior or interior of the window unit. Horizontally sliding windows generally have higher air leakage rates than projecting or hinged windows.

Sliding doors can be :

- Rail Type, or Top hung
- Its only more bigger in size/panelling Its great for Maintaining Ventilation on Rooms.
- Basically Sliding Doors are of the Same mechanism and operation to the sliding window.





PRODUCTS: CASEMENT & AWNING WINDOW

Hinged at the sides & have lower air leakage rates than sliding windows from the same manufacturer because the sash closes by pressing against the frame. -Project outward, providing significantly better ventilation than sliders of equal size. Because the sash protrudes from the plane of the wall, it can be controlled to catch passing breezes, but screens must be placed on the interior side.

-Casement/Awning Window opening can reach up to 75%, while sliding windows are limited to less than half or 50% of the window area.

-Casement Windows can be Hinge Type, Bar Hinge Type

-Casement windows open outward for light and proper ventilation.





PRODUCTS: BI-FOLDING DOOR

A heavy Duty system, watertight and provides a good ventilation & wide opening when it's fully open

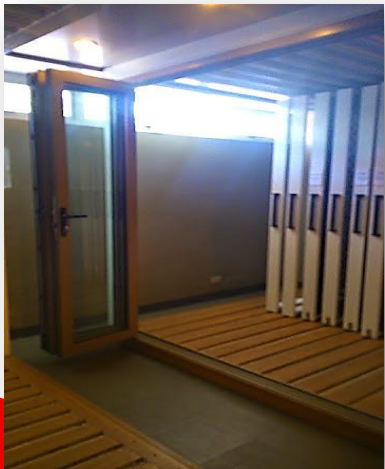
FULLY CLOSED



HALF CLOSED/OPEN



FULLY OPEN



Accordian / Bi-Fold Door with Colonial Bars





PRODUCTS: SEMI-FRAMELESS & FRAMELESS DOOR

Semi-Frameless Bi-folding Door

For interior partitions and enclosures or openings that are not subject to watertight issues

FULLY CLOSED



FULLY OPEN



Frameless Door

This type of system uses Floor checks/Springs and patch fittings





PRODUCTS: SEMI-FRAMELESS & FRAMELESS DOOR

Revolving Door

Heavy Duty Door appropriate for Building Entrance door





PRODUCTS: FIXED POINT SYSTEM

Also called "Spider Glass System" where by the Curtain wall/ Window/ Doors are supported by Point Fixings. The intent is to maximize visibility on the windows, curtain wall, window. Used to achieve beautiful façade with less hampered view from inside of the building. Used to Storefront, Canopy, Skylight & railings.

Stainless Steel Grade:

1. GRADE 304- GOOD FOR INTERIOR WORKS
2. GRADE 316-GOOD FOR EXTERIOR WORKS NOT SUBJECTED TO TOO MUCH ACIDIC ENVIRONMENT
3. GRADE 316L- USED FOR HIGHLY ACIDIC ENVIRONMENTS



Bright Shot Blasting Finish



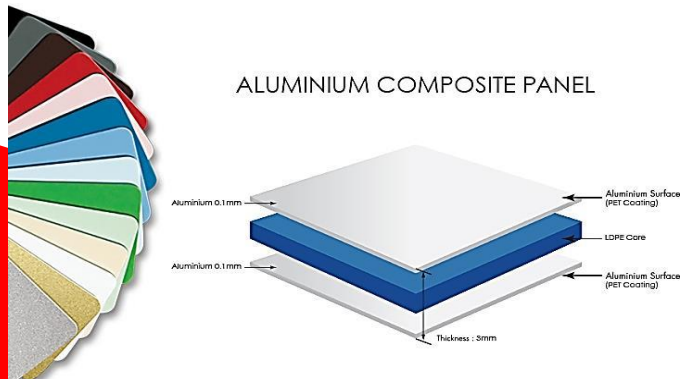
PRODUCTS: ALUMINUM COMPOSITE PANELS

Used in Cladding of Walls, Columns, Roofs & Canopies

Thickness: 3,4,6,8,10,15 mm

Aluminum Skin thickness: 0.15,0.18,0.21,0.25,0.3,0.35,0.4,0.45,0.5mm

Commercial Sizes available: Standard 1.2Mx2.4M

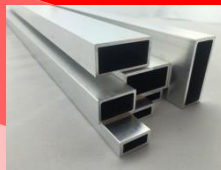


Accessories:

1. Weather Sealant



2. Aluminum Framing



3. Backer Rod



4. Screws and Rivets



5. Aluminum Angle Brackets



Applications:





PRODUCTS: LOUVERS

Architectural Louvers:

Usually made up of Tubular grills/ Alum. blades which is the main purpose is to hide and provide intrusion protection to Mechanical installations like Air Intakes, Exhausts and Air conditioning Units while maintaining air flow on the area.

Acoustic Louvers:

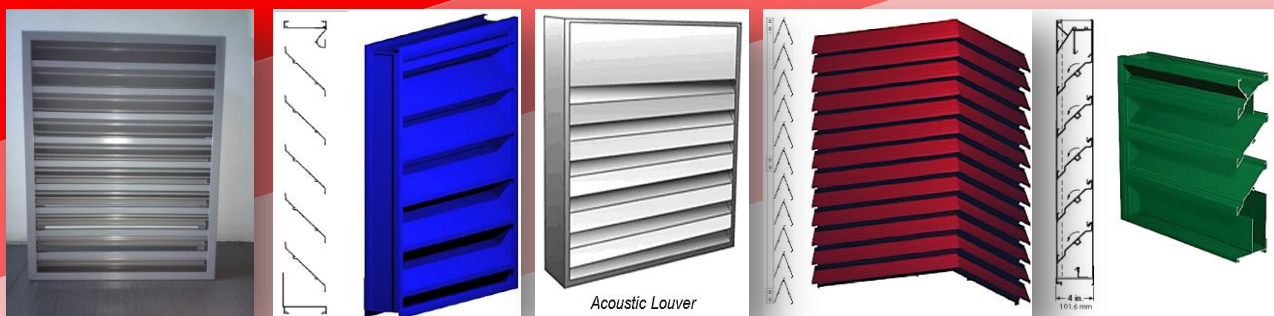
Are specially designed louvers which has a main purpose of Insulating noise/sound coming from a Gen. Set or machine Rooms same time allowing ventilation or airflow through the louver.

Performance Louvers:

Are specially designed louvers which has a main purpose of Protecting the Installation from Weather conditions like rain and suns heat while allowing ventilation to pass thru.

Demountable Louvers:

Louvers (Architectural, Weatherproof, acoustic or performance louver) which have provisions for Locking pins which can be unlocked so as to demount louver temporarily possibly to give access for servicing of enclosed structures.





PRODUCTS: VERTICAL/ HORIZONTAL ALUMINUM SLATS

Vertical/Horizontal Aluminum Slats

A very simple approach to somehow conceal the unwanted Air Con Unit's part, rough finished walls from the building. It can even serve as a vertical or horizontal architectural design or even use at your main gates using variety of powder coated colors of your choice.

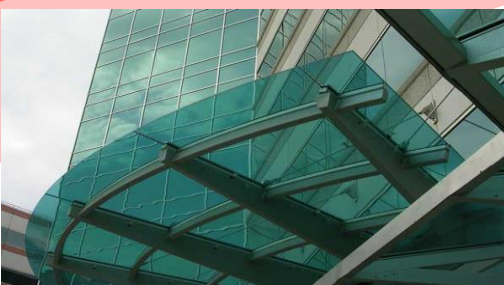




PRODUCTS: CANOPY

Canopy

Made of Glass and Aluminum and Good to use as overhead roof or else a structure over which a fabric or metal covering is attached, able to provide shade or shelter from weather conditions such as sun and rain. A canopy can also be made and Cladded with ACP or Solid Aluminum Sheet.





PRODUCTS: SKYLIGHT

Skylight

A light-transmitting structure made of Glass and Aluminum that forms all or part of the roof space of a building for day lighting purposes.





HALLWAY RAILINGS



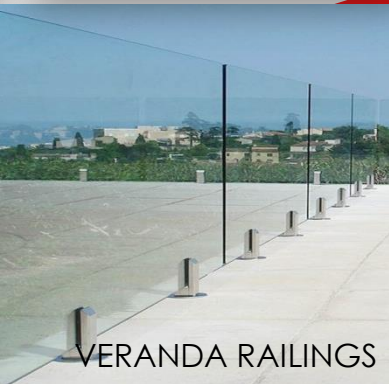
HALLWAY RAILINGS



HALLWAY RAILINGS



VERANDA RAILINGS



VERANDA RAILINGS



VERANDA RAILINGS



BALCONY RAILINGS



BALCONY RAILINGS



BALCONY RAILINGS



STAIR RAILINGS



STAIR RAILINGS



STAIR RAILINGS



PRODUCTS: SHOWER ENCLOSURES

Swing/Pivot Shower Enclosure

The **Aust-Phils** range of pivot shower enclosure offers a great alternative to the traditional shower enclosure. Quality pivot hardware with strength and durability is used to ensure smooth trouble free operation. Your pivot shower enclosure can also be manufactured without side styles thus eliminating the aluminum content of the screen.





PRODUCTS: SHOWER ENCLOSURES

Sliding Shower Screens

The traditional 3 or 2 door sliding screen/enclosure is manufactured to withstand years of rugged usage and bathroom steam. In addition, all the doors are top hung for ease of operation and feature an open bottom sill which reduces scum build-up and minimizes cleaning.





REPAIR & MAINTENANCE:

With the initiative of our President and Top Management to enhance our Repair & Maintenance Services they decided to create **AUST-PHILS FAÇADE AND RESTORATION INC.** to handle problems of our existing and new client such as:

*Replacement of Accessories such as

- Door & Window Handles
- EPDM Gaskets
- Sliding Door/Window Rollers
- Door & window hinges and Friction Stays
- Floor Springs
- Patch Fittings
- Door & window Screens
- Patch Fittings
- Floor Springs

*Dismantling and replacement of damaged or broken glass for windows, doors, curtain wall, Aluminum Composite Panel and stainless cladding works.

*Re-alignment and sealant application works.

*Deglazing and re-glazing works.

*Troubleshooting and repair for window, curtain wall, Aluminum Composite Panel and stainless cladding works for water leakage problems.

*Curtain Wall Glass, Door and Window Glass Cleaning



“**Excellent Product Quality** and service is our Promise. Attention to detail **is our tradition**”



**AUST-PHILS
ALUMINUM INT'L., INC.**



ADDRESS:

(Main Office)

#8 Main Ave., ACSIE Compound
West Service Road, Brgy. Marcelo, Bicutan,
Paranaque City, Philippines 1700

(Cebu Office)

G/F Yap Fraternity Bldg.,
Humabon Avenue,
North Reclamation Area,
Cebu City, Philippines 6000



PHONE:

(Main Office)

Tel Nos: 632-8824-0488/632-8846-6687/632-8846-6585
Fax No.: 632-824-4778

(Cebu Office)

032-233-8261
032-233-3361
Fax No.: 231-6198



EMAIL:

(Main Office)

aust-philis.sales@gmail.com
austphilis.executive@gmail.com

(Cebu Office)

jhoy98_austphil@yahoo.com



WEBSITE:

www.aust-philis.com